



UNIVERSITY OF
LEICESTER



The Centre for Ethnic
Health Research
national centre for tackling health inequalities



Leicester
Institute for
Advanced
Studies

What did we do?

Research on COVID-19 communication and health inequalities within ethnic minority communities in Leicester during the pandemic



Which communities? How did we connect?

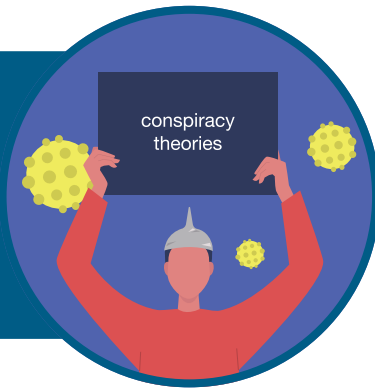
- African-Caribbean, South Asian and Somali communities in Leicester
- 6 focus groups and 6 interviews with community leaders from local organisations



What did we find?: Vaccines



Negative opinions about vaccines connected to low confidence in Government and conspiracy theories.



Young people's negative attitudes linked to distrust of Government historical treatment of ethnic minorities.



Local leaders shared vaccine information on social media and addressed community concerns.



Vaccine take-up motivated by fear of travel restrictions, not changed opinion of Government information.



What next?

- Local health authorities need to work with community leaders to maintain support to ethnic minorities and provide them with ways to manage their experiences from the COVID-19 pandemic.
- More studies needed on the connections between anxiety, ethnic minorities, social media use and inequalities.
- Need to conduct bigger studies developed and carried out with a wider range of communities.

